



# Hampshire and Isle of Wight ICS Frimley ICS

## Update on System Design

July 2022





## What is happening...

From 1<sup>st</sup> July 2022 statutory changes on how we collaborate to improve health and care for residents came into effect. The introduction of Integrated Care Boards and Integrated Care Partnerships offer new ways of our partner organisations to work together in this aim.

The NHS was set up primarily to provide episodic treatment for acute illness, but it now needs to deliver joined-up support for growing numbers of older people and people living with long-term conditions. As a result, the NHS and its partners need to work differently by providing more care in people's homes and the community and breaking down barriers between services.

- **The Hampshire & Isle of Wight Integrated Care System serves a population of 1.9 million people in Portsmouth, Southampton, Isle of Wight and the majority of Hampshire.**
- **The Frimley Integrated Care System serves a population of 800,000 people across Surrey Heath, Slough, Windsor & Maidenhead, Bracknell Forest and North East Hampshire**



# Two Integrated Care Systems

## Working together in the future

We have two integrated care systems in adjacent geographies, both of which are focused on improving population health and reducing health inequalities.

Local Authority boundaries, combined with historical NHS commissioning arrangements, means that we have an opportunity to strengthen our joint approach to co-ordinating our aims, objectives and ways of working.

Our systems are working ever more closely together to achieve this aim.

We have a long history of the two areas working together across both health but also with Local Authority partners and there are many services already jointly commissioned including Continuing Health Care, children's services and maternity.

We have also more recently strengthened our joint working through our Covid pandemic response and our focus on improving health inequalities

Since we last updated HASC we have:

- engaged with our partners to find out how we can best work together
- identified key areas where joint working will have maximum impact
- designed simplified governance and decision making structures

# How each aspect of our system functions – HIOW ICS

## Integrated Care Partnership

The Integrated Care Partnership is a statutory committee, building on existing partnerships and collaboration across the system statutory committee. It is an alliance of NHS, local government and other partners working jointly to improve the care, health and wellbeing of the population of Hampshire & Isle of Wight. The Integrated Care Partnership sets the overarching strategy for health and care in HIOW, built up from an assessment of need in each part of the area, and facilitates joint action to deliver that strategy .

## HIOW Integrated Care Board

The Integrated Care Board is the statutory organisation responsible for setting the strategic plan for the NHS to deliver its part of the health and care strategy. It allocates NHS resources and establishes system governance arrangements that support collective accountability. The Integrated Care Board will work through our four places and our transformation programmes (see below), and arranges for the provision of health services from our provider led healthcare delivery system.

## Four Place partnerships

In our four place partnerships - in Hampshire, Isle of Wight, Portsmouth and Southampton - integrated teams (including local authority, Integrated Care Board, provider, and voluntary partners) come together to understand the needs of the population, agree joined up local plans to meet those needs, develop strong broad local partnerships and implement local solutions. The Integrated Care Board delegates local decision making for key NHS services to these partnerships.

## Provider led healthcare delivery system

Health and care providers work individually and together through Primary Care Networks and provider collaboratives in each local delivery system (North & Mid Hampshire, Portsmouth & South East Hampshire, Southampton and South West Hampshire and IoW) and at the scale of Hampshire and IoW (e.g. the acute and mental health collaboratives) to plan, co-ordinate and deliver integrated care for the population. Over the next two years we see resources to enable local and at-scale collaboratives to succeed shifting from CCGs to the provider led delivery system.

## HIOW Transformation Programmes

ICS-wide transformation programmes in which system partners work together to transform health and care: agreeing the consistent care models and pathways based on best practice that we will deploy across Hampshire and Isle of Wight, identifying and minimising unwarranted variation and co-ordinating whole system action to implement the NHS Long Term Plan and Hampshire and Isle of Wight strategy across the Integrated Care System.

# Structure of our ICS



## Integrated Care Board

- Our Chair and Chief Executive, Lena Samuels & Maggie MacIsaac, have been appointed.
- We have five Local Authority partner members including Graham Allen from Hampshire County Council and Cllr Simon Bound from Basingstoke and Deane Borough Council.
- Two Primary Care partner member
- Two NHS Provider partner members
- First meeting took place on 1<sup>st</sup> July 2022.

## Integrated Care Partnership

- **Our strong preference is for an inclusive partnership, with broader representation, with clear linkages to the existing Health & Wellbeing Boards.**
- **Focus groups are meeting to design the model for the Partnership and how it can best build the Integrated care strategy. First meeting will be end of July 2022.**
- The proposed membership includes:
  - Integrated Care Board independent Chair & Chief Executive
  - City, county, district and borough councils, including Directors of Public Health, and representatives of Directors of Adult and Children's Services
  - Local Authority elected members
  - Representatives of: NHS provider chairs and Chief Executives
  - Primary Care
  - Representatives of the place partnerships in Hampshire, Southampton, Portsmouth, Isle of Wight
  - Healthwatch
  - Representatives of the Voluntary, Community and Social Enterprise (VCSE) sector; fire and police representatives; representatives of academic institutions and Wessex Academic Health Science Network.

## Place based partnerships

- We have been strengthening our place based arrangements by linking with key leaders across the NHS and Local Authorities at Place level ready for July, arrangements will continue to develop through 2022.
- We have reviewed principles for local decision making to ensure we are working as close to communities as possible.



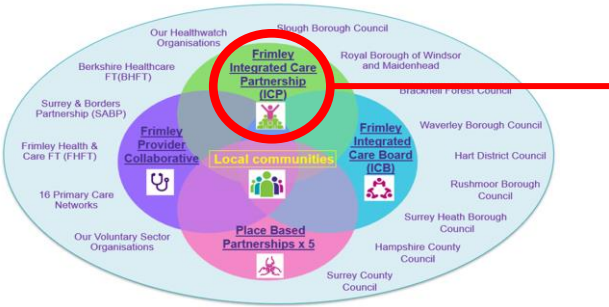


# Frimley Public Services Partnership aka 'The Integrated Care Partnership' (ICP)

The ICP will be a statutory joint committee between the Local Authorities and the Frimley Integrated Care Board (ICB).

It will have a critical role to play in the ICS, facilitating joint action to improve health and care outcomes and experiences across the population, and influencing the wider determinants of health, including creating healthier environments and inclusive and sustainable economies.





# Frimley Public Services Partnership aka 'The Integrated Care Partnership' (ICP)

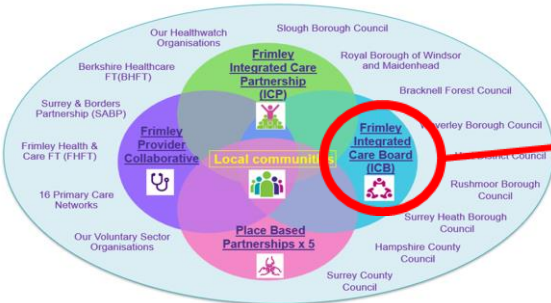
Building on our engagement with our partners, our local task and finish group have designed the Frimley ICP to have a strategic role, considering what arrangements work best in our local area by creating a dedicated forum to enhance relationships between leaders across the health and care system. The proposed remit for the ICP is to:

Consider and set the strategic intent of the partnership; act as final approver of the ICS Strategy, including the proposed programmes of work, outcomes and intended benefits;

Act as an objective “guardian” of the ICS vision and values, putting the population’s needs and the successful operation of the ICS ahead of any sector or organisation specific areas of focus;

Provide a forum for the consideration of Wider Determinants of Health and Health Inequalities, taking fullest advantage of the opportunities arising to hear the views and perspectives of the broadest range of local stakeholders and democratic representatives.

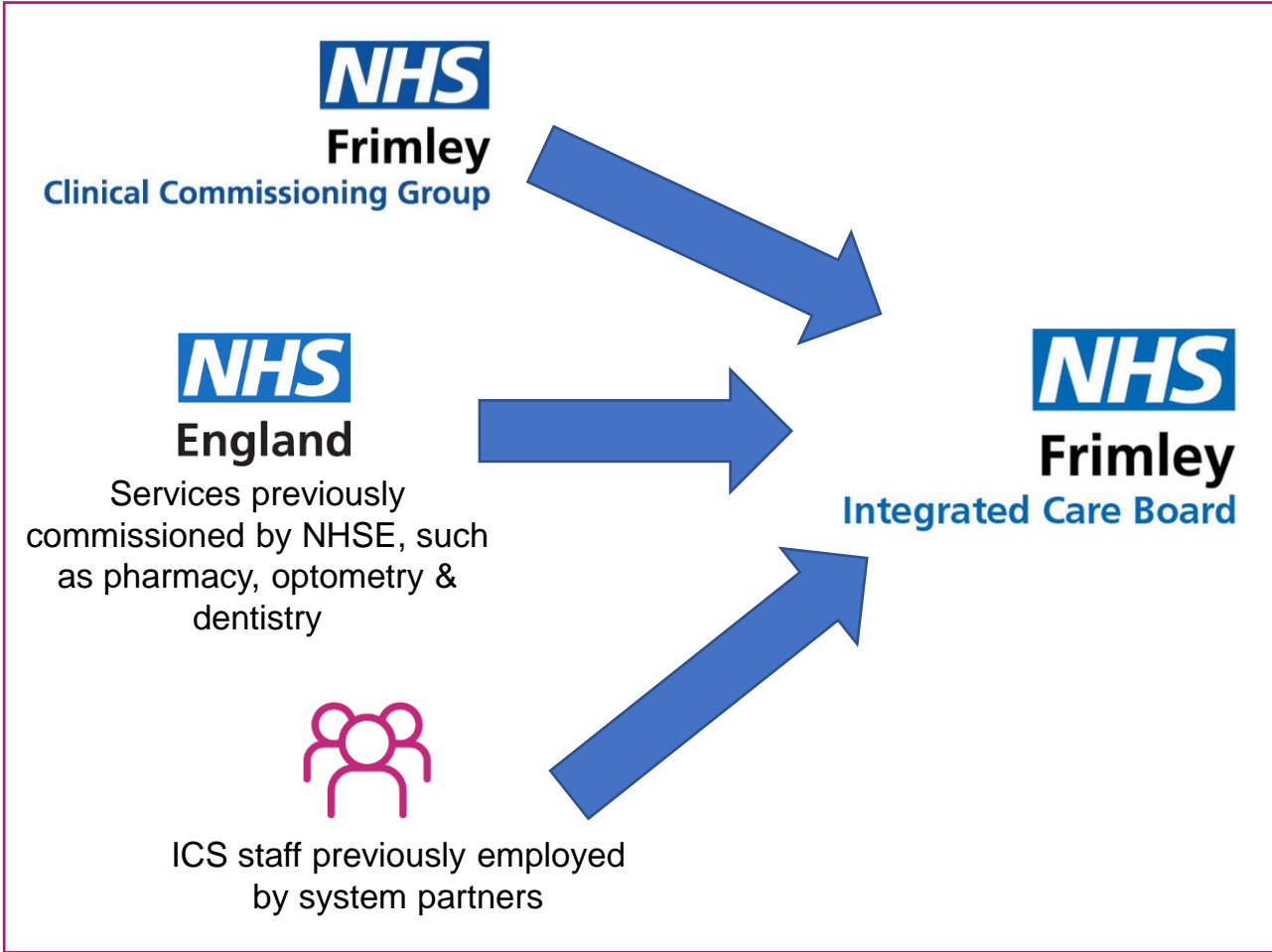
Frimley ICP will create a platform for its entire membership. Local Authorities, NHS, Healthwatch, Voluntary, Charity and Social Enterprise (VCSE) organisations will form an ‘assembly’. The assembly will ensure a voice for those who can speak on behalf of their communities and bring a very new approach to the design of our strategic ambitions. The ICP will work closely with the ICB to ensure all voices are heard in planning and prioritisation decisions.



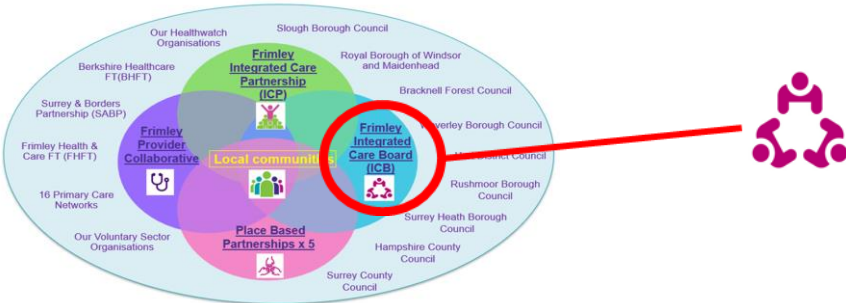
# NHS Frimley aka 'The Integrated Care Board'

On 1<sup>st</sup> July the ICB will inherit all of the statutory duties and functions currently discharged by NHS Frimley CCG, as well as a number of other responsibilities currently held by NHS England. All staff below board level who work for the CCG, as well as those members of our broader ICS team who are hosted by partner organisations, are transferring into the new organisation when it is established.

Our ways of working will inevitably need to change in order to meet the requirements of the future. We are starting from a strong position in this regard, with colleagues now well used to reaching across organisational boundaries in the planning, transformation and delivery of improvements to services in our geography. Nevertheless, the ICB will build its own culture and style with an ongoing developmental approach that seeks to build on the successes that have come before.



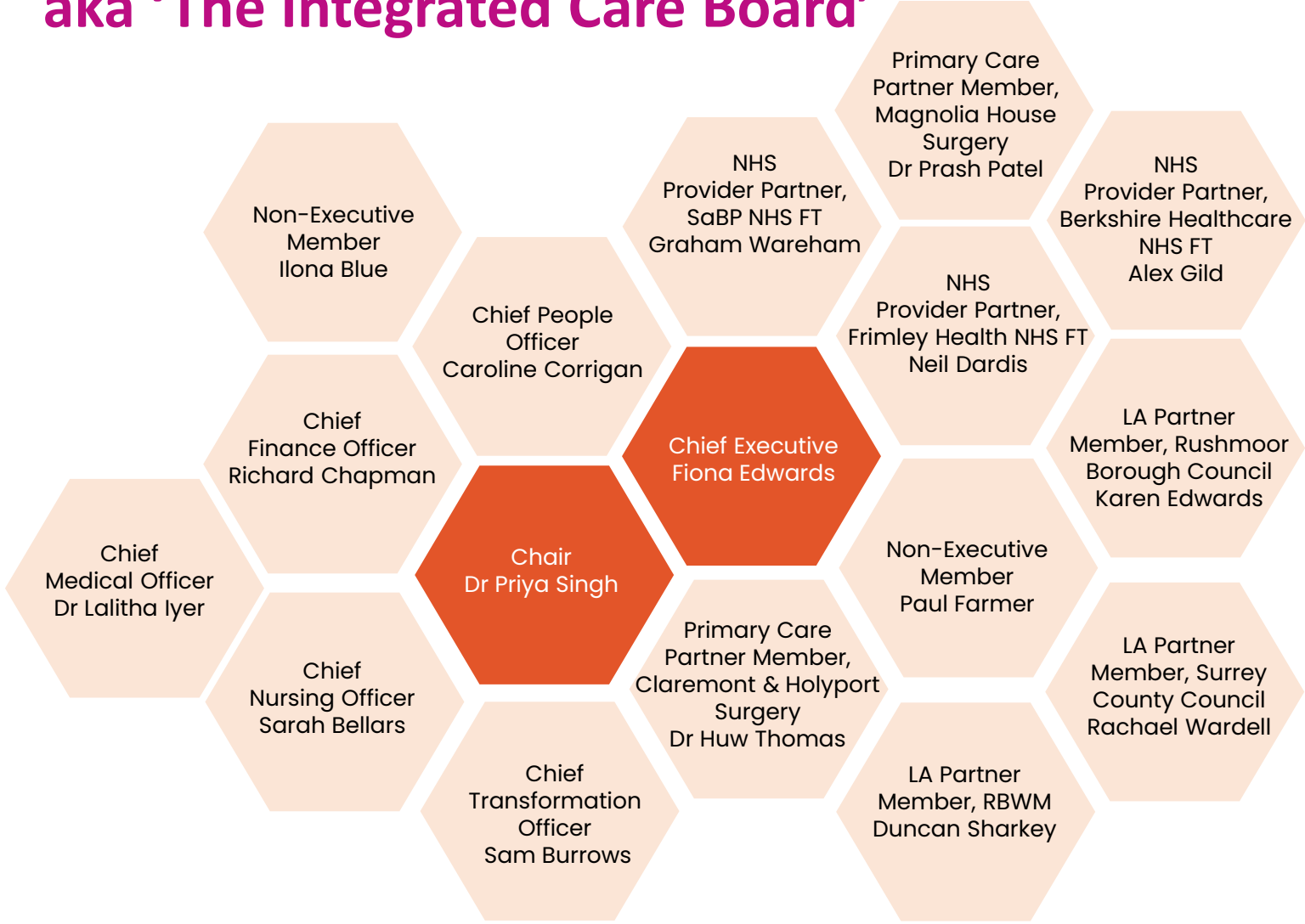




# NHS Frimley aka 'The Integrated Care Board'

A new Board will exist for the ICB. The value and benefit of having clinicians as a part of the decision-making process for a statutory body with a budget in excess of £1bn has been proved beyond any doubt and the Board of the ICB will seek to build on the previous success of this approach.

In the spirit of bringing greater expertise from our partnership to the decision making process, the Board of the ICB reflects new legislative requirements for positions filled by individuals with experience of working in the Local Government, NHS Provider and Primary Care sectors. We have completed our appointments to these roles and have shared the appointments with staff and partners.





# Questions?